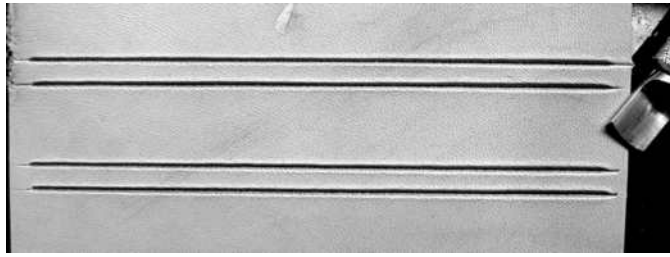




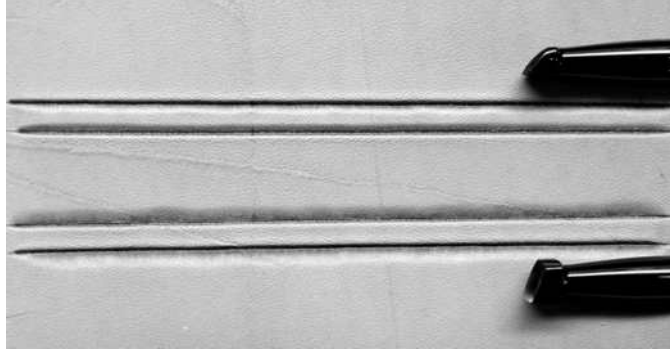
FINE HANDMADE TOOLS  
BY ROBERT BEARD · NEW MEXICO

36 Road 5243  
Farmington, NM 87401  
(505)632-7036  
Fax: (505)632-7038

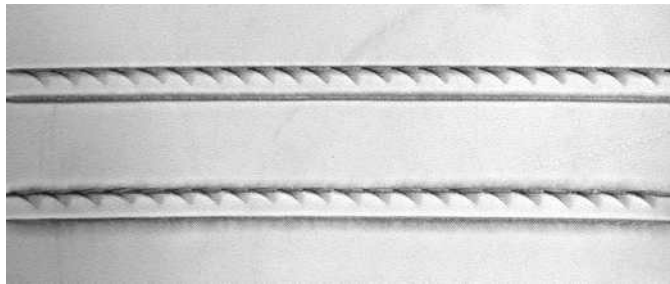
# The Mosby Rope Tool



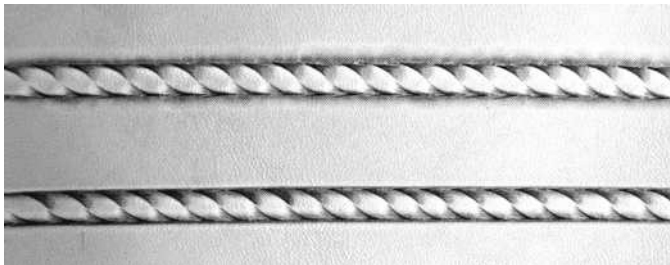
Cut two parallel lines the thickness of the rope that is desired.



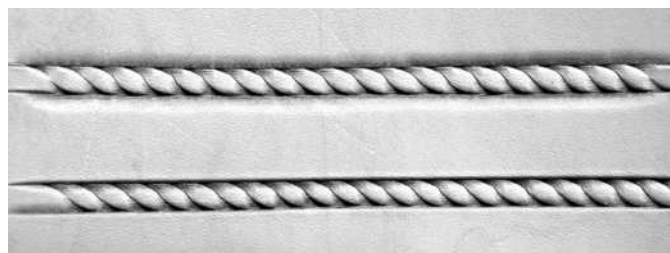
For inverted rope, bevel the inside edge of the line using a steep angled bevel (top).  
For raised rope, bevel the outside edge of the line using a standard bevel (bottom).



Stamp one side of the rope with the flat edge of the tool set against the line of the rope as shown. Tip the tool back slightly toward you and strike lightly. Advance the tool (working away from you) placing the stamp so that the narrow tip of the tool is set at the end of the previous impression. It should resemble the picture above.



Flip the project and stamp the opposite side. Begin the first impression so that it forms an "S" curve with the impression on the other side.



To complete the look, lightly cut a line between the two impression to emphasize the "S" curve.